

Powerdale Dam, 2009



June 2005

Pipe to powerhouse  
4 miles downstream

Diversion canal

"Bypass reach"

Diversion screen ↗

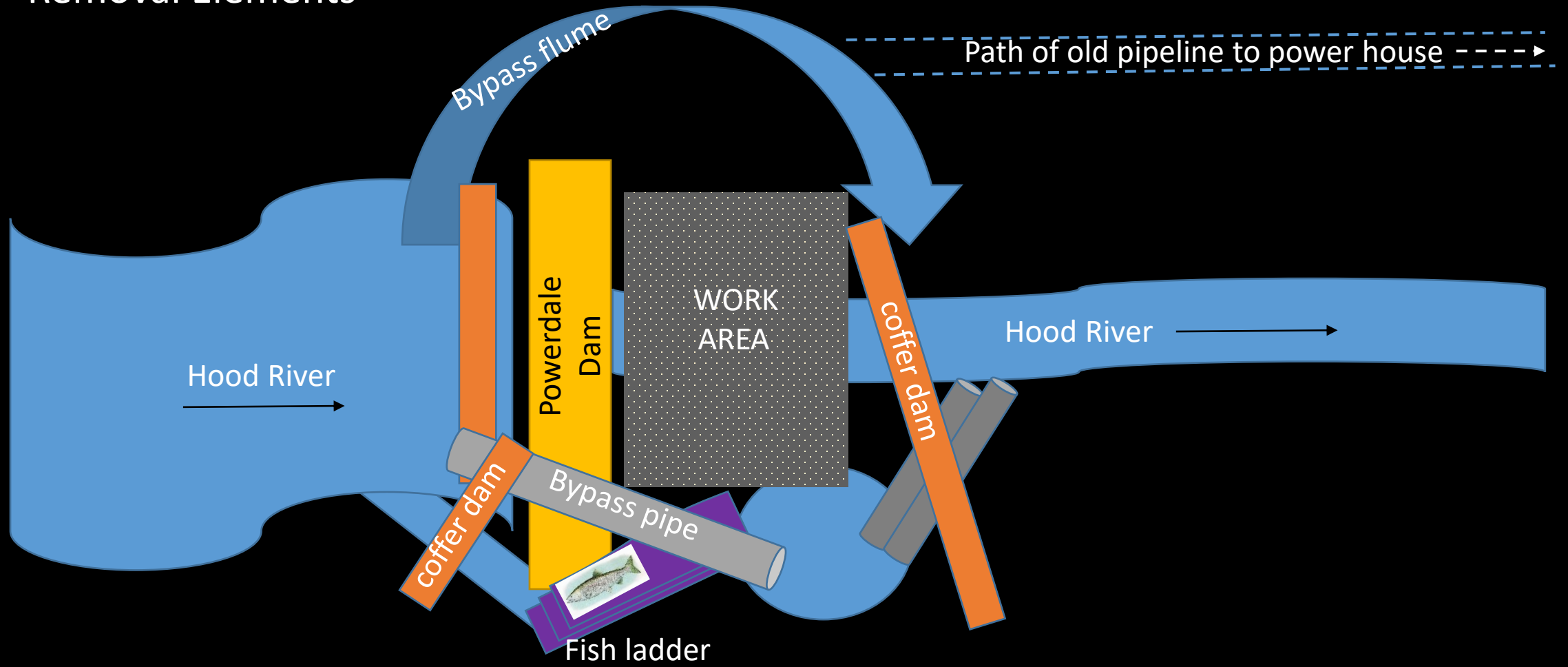
Community members discuss decommissioning plans with representatives from PacifiCorp



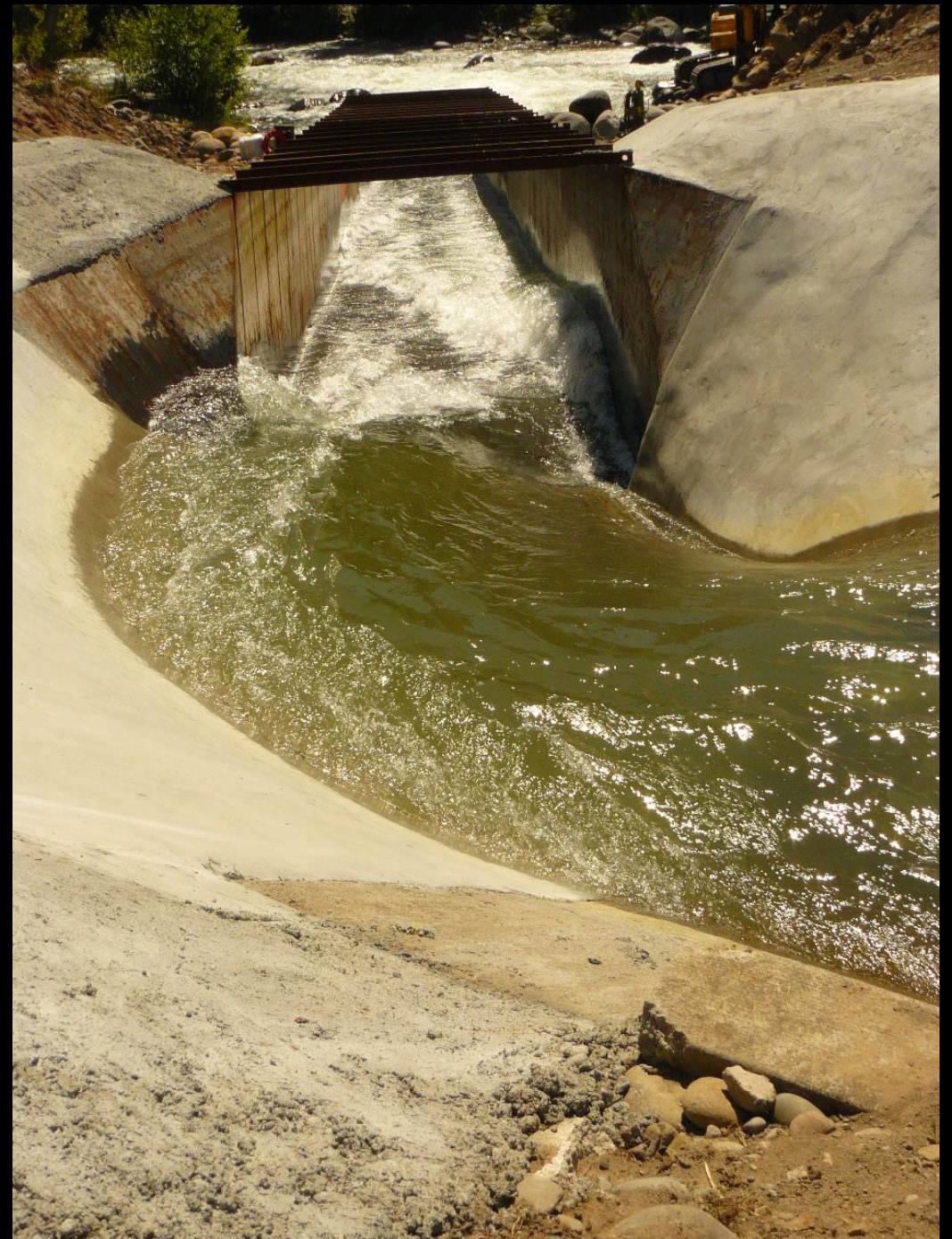
A large section of pipeline delivering water to the powerhouse were destroyed in 2006 debris flow



# Removal Elements



Step 1. Modify existing canal to return flow to river (originally used to convey water to power house 4 miles downstream).



Step 2.  
Construction of  
the lower  
coffer dam



July 2010



Google Earth

July 23, 2010



Entrance to fish ladder





Step 3. Build upper coffer dam.







August 13, 2010



August 25



September 8

Notice new stream bed being constructed below upper coffer dam



September 9









September 23















September 2018



Google Earth